

- **Educational Psychologist (EP)** may observe your child and suggest specific ways that we can enhance your child's learning.

Other support Services we may contact are;

- **Paediatrics**
- **Working Together Team**
- **Sensory Impairment**

How you are kept informed

- Parent Consultations with the class teacher
- You will receive a copy of all reports written about your child.
- You may be invited to a review of your child's progress with the SENDCO and any of the Educational Support services that are involved with your child.



Remember that all of this needs your permission and referrals will only be made in consultation with you

What can I do?

It is essential that you attend any reviews for the benefit of your child.

We will try to find a time that is suitable for you to attend

Keep school informed of any changes in family circumstances that may affect your child's education

Take note of the valuable suggestions that are given in the reports and give them a try!

How long will my child be on SEND?

For as long as it is in the best interest of your child to receive additional support. When it is felt that your child is making adequate progress he/she may be removed from SEN in consultation with you.

Remember!

We want only the best for you and your child. Your role in the education of your child is vital, because you know your child best and the more closely we can work together, the more effective any extra help we can provide will be.



Come and talk to us at any time



Skegness Junior Academy

All you need to know

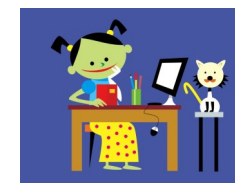
about

Special

Educational

Needs and

Disabilities





At Skegness Junior Academy we want only the best for your child. We aim to work together with you as parents to achieve this.

About 1 child in 5 will at some stage have difficulties during their time in education.

We aim for our SEN provision to meet your child's individual needs.

This brochure is designed to help you through the process of SEN.

Who will help you?



- The class teacher
- SENDCO—Mrs Pilcher
- Head of School—Miss V Hardwick
- Executive Principal—Mrs Pryme

Once concerns have arisen these will be passed onto the SENDCO who will co-ordinate the SEN provision for your child.

What does SEND mean?

Special Educational Needs.

If your child has

- a physical disability; or
- a problem with sight or hearing;
- difficulties with communication;
- learning difficulties;
- emotional or behavioural problems;
- medical or health problems; or
- particular difficulties with reading, writing or mathematics

We will discuss this with you and your permission will be sought for your child to be added to the SEN register.

What happens next?



- The class teacher will discuss with you difficulties that your child may be experiencing and any concerns that you may have.
- You will then be asked to sign a gold form. This gives school permission to add your child to the SEN register
- Your child will be given an Individual Provision Map (IPM) to help their educational needs. Targets will be set by the class teacher in consultation with you and your child. Teaching Assistants will support your child in achieving these.



What will be in the IPM?



- your child's targets;
- what special help your child will get;
- who will give your child that help;
- how often your child will get help;
- how and when your child's progress will be reviewed.

What happens if the targets are not met?



We may refer your child to be seen by Specialist Teacher's from other educational support services such as;

- **Speech and Language Therapist (SALT)** if there are any concerns about your child's speech such as a stammer or significant speech delay
- **Specialist Teacher and Applied Psychology Service (STT)** will work with your child to find out if there are any gaps in their learning and give specific ideas that may help your child to progress. This will be reviewed to assess progress